

ARIES MIZUKI 64,000 DWT Bulk Carrier 58



Contents



By Builder



By Ship Type





Contents



By Builder



By Ship Type

ARIES MIZUKI 64,000 DWT Bulk Carrier 58

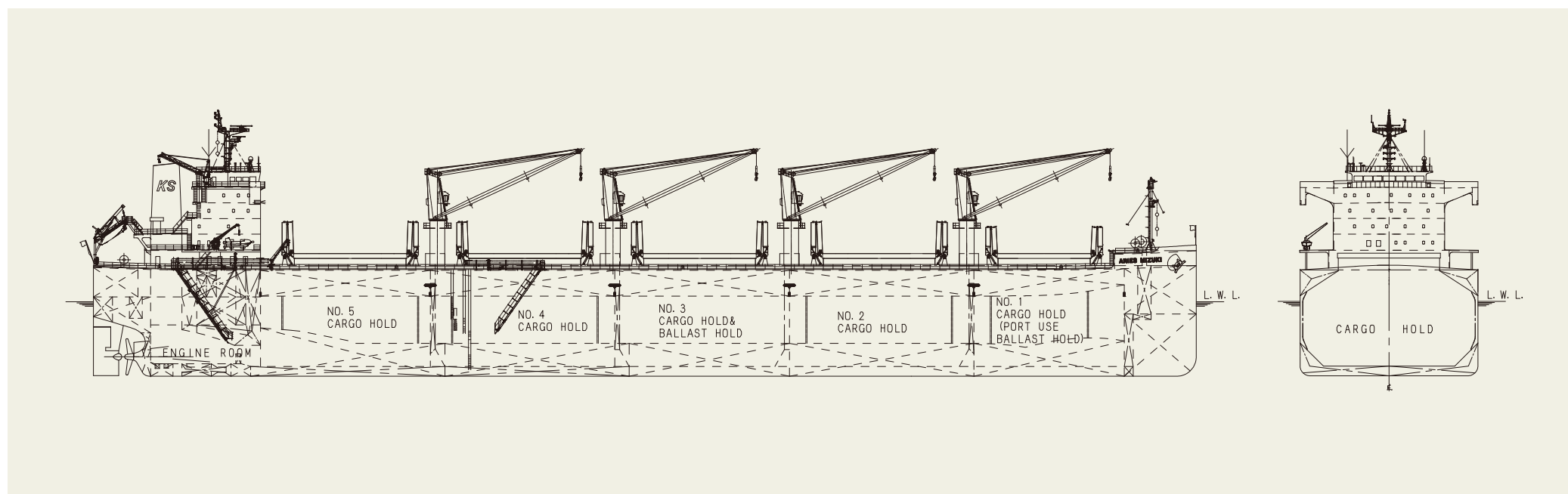
The 64,000 dwt type bulk carrier ARIES MIZUKI was built at SHIN KURUSHIMA SANOYAS SHIPBUILDING CO., LTD. and delivered to CASSIOPEIA MARINE S.A. in June 2025.

Features

1. The vessel has five (5) cargo holds.
2. The upper deck hatch covers are folding type and operated by hydraulic cylinders.
3. The vessel has four (4) sets of 31-ton electro-hydraulic type single deck cranes.

PRINCIPAL PARTICULARS

Length (o.a.).....	199.99 m	MCR (kw x min ⁻¹).....	6,650 kW x 88.8 min ⁻¹
Length (b.p.).....	197.30 m	NOR (kw x min ⁻¹).....	5,650 kW x about 84.1 min ⁻¹
Breadth (mld.).....	32.24 m	Speed (service).....	abt. 14.1 knots
Depth (mld.).....	19.22 m	Complement.....	25 P
Draft (mld.).....	11.30 m	Classification.....	NK
Gross tonnage.....	36,372	Loading capacity (grain).....	81,490 m ³
Deadweight.....	63,810 t	(bale).....	78,218 m ³
Main engine.....	mitsui-man B&W 6S50ME-C9.7-EGRBP	Builder.....	Shin Kurushima Sanoyas Shipbuilding Co., Ltd.





Contents



By Builder



By Ship Type

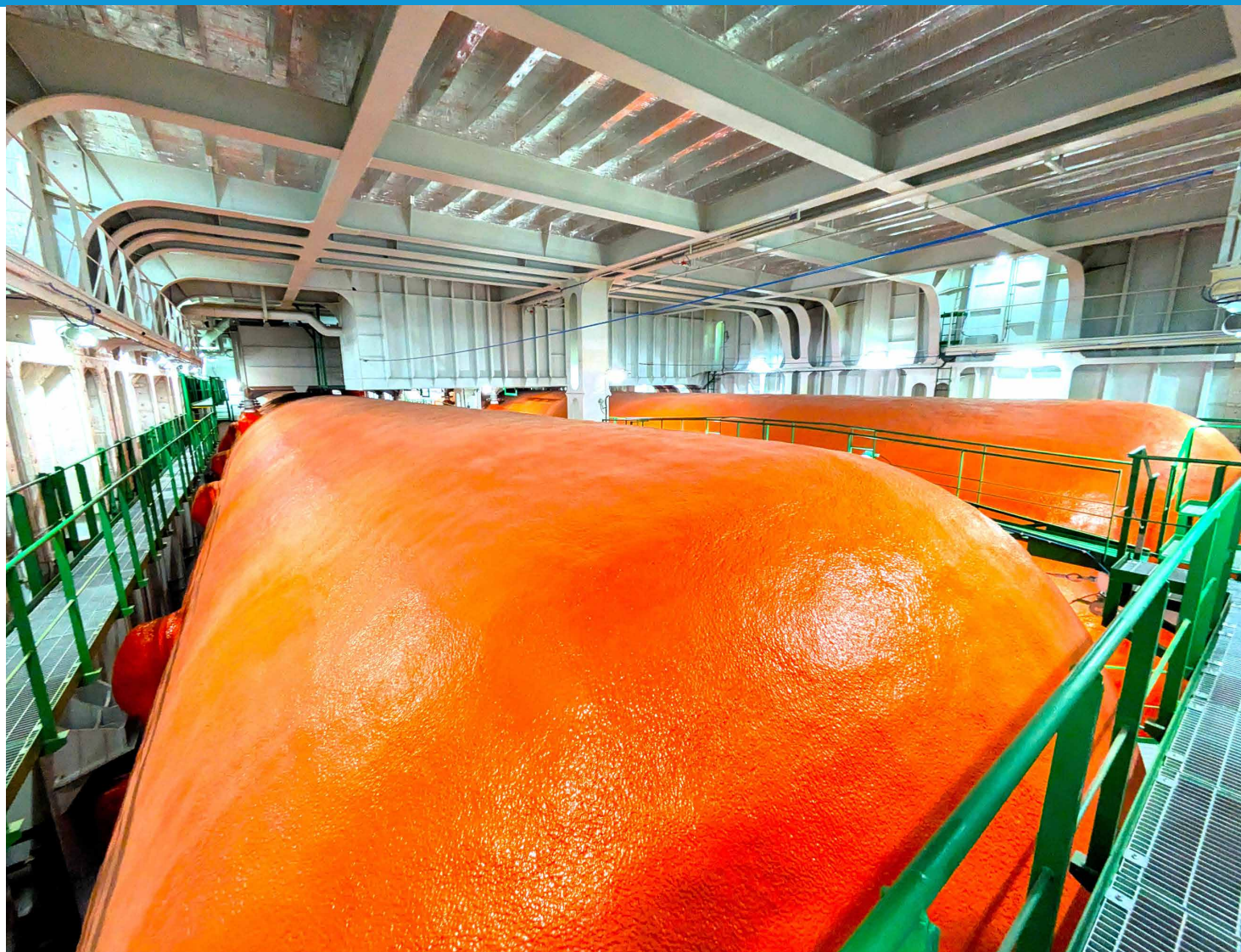
Shin Kurushima Sanoyas Shipbuilding deliveries of FGSS for PCC 97

Shin Kurushima Sanoyas Shipbuilding have recently delivered FGSS(Fuel Gas Supply System) to 6,900-unit LNG fueled car carrier built by Shin Kurushima Toyohashi Shipbuilding. This vessel is equipped with dual fuel engine capable of using both LNG and MGO as its main engine. Operating on LNG fuel reduces GHG emissions compared to conventional vessel is fueled MGO.

The FGSS vaporizes LNG from the fuel tank, and supplies the vaporized fuel gas to the dual fuel engine. Our FGSS modularizes key components into a single unit, minimizing installation space and improving operability and maintainability by integrating them into the hull. Furthermore, our original FGSS control system automatically controls operations from start to shut down, reducing crew workload and enabling integrated security monitoring, contributing to safe operation.

The vessel is installed with two LNG fuel tanks, enabling longer voyage. The tanks are made of 9% nickel steel, which can withstand extremely low temperature of -162°C . The tank surfaces are also insulated in a dedicated insulation shop, This facility is equipped with air conditioning to control temperature and humidity, and is isolated from dust. This quality allows for long-term, low temperature storage of LNG throughout the voyage.

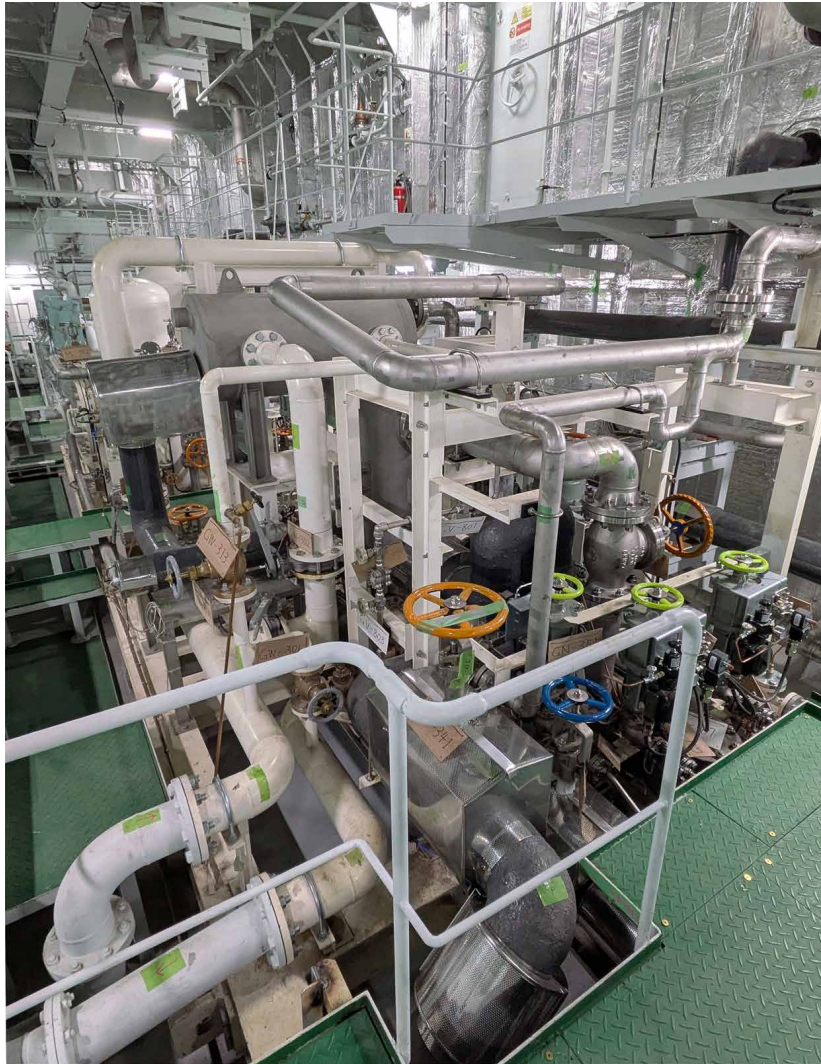
Our gas tank division manufactures LNG fuel tanks and FGSS for LNG-fueled vessel that are suitable for all ship types, equipment layouts and operation methods.



LNG Fuel Tank



Shin Kurushima Sanoyas Shipbuilding deliveries of FGSS for PCC 97



FGSS(Fuel Gas Supply System)

